



## Advanced Weight Management Support<sup>\*‡</sup>



Everybody wants to have a lean and healthy body composition, but our modern diet and lifestyle can make this challenging. Ditching bad habits and processed and refined foods isn't easy. But with Mannatech's TruSHAPE and the TruHealth™ 30-Day Fat-loss System, combined with healthy lifestyle choices, you can achieve your fat loss goals.<sup>\*‡</sup>

TruSHAPE has been specially formulated to support the healthy digestion and utilization of carbohydrates, healthy glucose and insulin levels and also helps provide the feeling of satiety.\* It's gentle on your stomach and you only need to take one capsule each day!<sup>\*‡</sup>

Your fat loss and weight management goals have never been so easy to achieve!<sup>\*‡</sup>

### Benefits:

- Supports the healthy digestion and utilization of carbohydrates\*
- Supports healthy blood glucose levels\*
- May help support healthy blood lipid levels\*
- Supports a healthy cardiovascular system\*
- Helps provide a feeling of satiety\*
- Supports healthy body composition<sup>\*‡</sup>
- Helps to reduce body fat<sup>\*‡</sup>
- Supports a healthy metabolism\*



### FUN FACT

Posting photos of healthy foods on the fridge may help your healthy weight goals. Pictures act as subtle reminders of a person's healthy weight and lifestyle goals.

<sup>‡</sup>When taken in conjunction with a reduced calorie diet and regular exercise.

\*These statements have not been evaluated by the Food and Drug Administration. This product is not intended to diagnose, treat, cure or prevent any disease.



## TruSHAPE

### Supplement Facts

Serving Size: 1 capsule / Servings Per Container: 30

Amount Per Serving	% Daily Value
Calories	5
Chromium	200 mcg
(chromium polynicotinate)	571 %
Proprietary Blend	510 mg
Salacia chinensis extract <sup>††</sup> (root), Garcinia cambogia extract (fruit) standardized to 60% hydroxycitric acid, Zingiber officinale extract <sup>†</sup> (root)	**
Ambrotose <sup>®</sup> Complex Blend	38 mg
Rice hull concentrate, arabinogalactan <sup>***</sup> (from Larix spp. wood), gum tragacanth, modified citrus pectin, Aloe vera extract <sup>§</sup> (inner leaf gel powder), sodium alginate	**

\*\* Daily Value not established.

§Manapol<sup>®</sup> Aloe Vera Extract

**Other ingredients:** Hydroxypropyl methylcellulose.  
**GLUTEN FREE**

Ginger and OmniLean are trademarks of  
OmniActive Health Technologies Ltd.



**Recommended Adult Use:** Take one capsule daily in the morning with at least 8 ounces of water AND food or take one capsule with a TruPLENISH<sup>™</sup> Nutritional Shake.

**Warning:** If you are pregnant, nursing, taking medication, have a health condition or are planning a medical procedure, consult your health professional before use. Discontinue use and consult a doctor if any adverse reaction occurs.

Do not use if inner seal is missing or broken. Keep out of reach of children. Keep bottle tightly closed. Store in a cool, dry place.

US.16001.44.001

*Please read the product labels for detailed information.*

A unique and powerful ingredient in the new, all-natural TruSHAPE formula is Salacia, a plant known to naturally support the healthy digestion of carbohydrates and the feeling of satiety. Additional ingredients also include garcina cambogia, chromium, ginger, modified citrus pectin and glyconutrients from Manapol.

**IF YOU'RE READY TO TAKE BACK YOUR LIFE AND SEE RESULTS, CONTACT ME TODAY!**

**P.S. In 30 days, you'll wish you had started today!**

100% Satisfaction Guarantee! If you try our products and are not completely satisfied for any reason, you can return them within 180 days of purchase for either an exchange of like products or a refund.

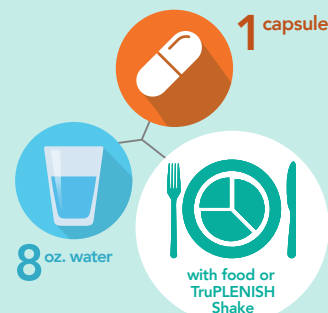
\*Always consult with your physician or other qualified healthcare provider before embarking on a new diet or program. This program is not recommended for pregnant or lactating women. If you are taking medications, have a health condition or are planning a medical procedure, consult your health professional before beginning this program. It is also not recommended for children under the age of 18. If you have any specific questions about these matters you should consult your doctor or other healthcare provider.

© 2022 Mannatech, Incorporated. All rights reserved.  
Manapol, TruHealth, TruPLENISH, TruSHAPE, Mannatech and Stylized M Design are trademarks of Mannatech, Incorporated.  
21551.1022

How to incorporate the new TruSHAPE capsule into the TruHealth 30-day Fat-loss System:

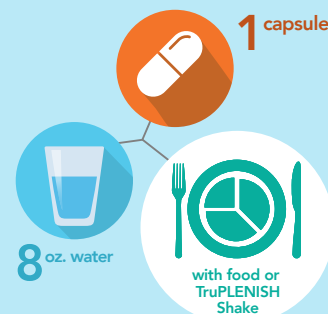
### During TruHealth 30-Day Fat-Loss System

**Cleanse Days**



**Once Daily in the Morning**

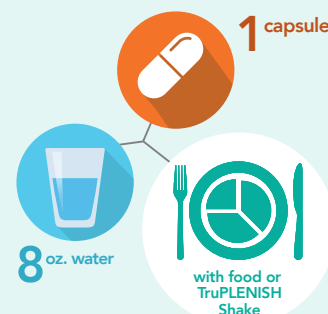
**Nourish Days**



**Once Daily in the Morning**

### Maintenance

**Daily Use**



**Once Daily in the Morning**

Learn more about the TruHealth Fat-Loss System:  
<http://library.mannatech.com/7814>

