



## New and Improved!

### Advanced Weight Management Support



**TruSHAPE™ capsules**  
A component of our  
**TruHealth™**  
30-Day Fat-Loss System\*

See reverse for Supplement Facts 

Everybody wants to have a lean and healthy body composition, but our modern diet and lifestyle can make this challenging. Ditching bad habits and processed and refined foods isn't easy. But with Mannatech's TruSHAPE Advanced Weight Management capsules and the TruHealth™ 30-Day Fat-loss System, combined with healthy lifestyle choices, you can achieve your fat loss goals.\*\*

Mannatech's new and improved TruSHAPE Advanced Weight Management capsule has been specially formulated to now support the healthy digestion and utilization of carbohydrates, healthy glucose and insulin levels and also helps provide the feeling of satiety. It's gentle on your stomach and you only need to take one capsule each day!\*\*\*

Your fat loss and weight management goals have never been so easy to achieve!\*\*\*

#### FUN FACT

Posting photos of healthy foods on the fridge may help your healthy weight goals. Pictures act as subtle reminders of a person's healthy weight and lifestyle goals.

#### Benefits:

- Supports the healthy digestion and utilization of carbohydrates\*
- Supports healthy blood glucose levels\*
- May help support healthy blood lipid levels\*
- Supports a healthy cardiovascular system\*
- Helps provide a feeling of satiety\*
- Supports healthy body composition\*\*
- Helps to reduce body fat\*\*
- Supports a healthy metabolism\*



\*When taken in conjunction with a reduced calorie diet and regular exercise.

\*These statements have not been evaluated by the Food and Drug Administration. This product is not intended to diagnose, treat, cure or prevent any disease.

© 2022 Mannatech, Incorporated. All rights reserved.

Manapol, TruHealth, TruHealth Design, TruSHAPE, Mannatech and Stylized M Design are trademarks of Mannatech, Incorporated. 21551.0122



## TruSHAPE Supplement Facts

Supplement Facts		
Serving Size 1 Capsule Servings Per Container 30		
	Amount Per Serving	% Daily Value
Calories	5	
Proprietary Blend	540 mg	†
[ <i>Salacia chinensis</i> extract (root), <i>Garcinia cambogia</i> extract (fruit) standardized to 60% hydroxycitric acid, <i>Zingiber officinale</i> extract (root), Rice hull concentrate, Arabinogalactan (from <i>Larix spp.</i> wood), Gum Tragacanth, Modified citrus pectin, Aloe Vera Inner Leaf Gel Extract Powder <sup>§</sup> , Chromium polynicotinate, Sodium alginate]		
† Daily Value not established.		

§Manapol® Aloe Vera Extract

**Other ingredients:** Hydroxypropyl methylcellulose.  
**GLUTEN FREE**

Ginger and OmniLean are trademarks of  
OmniActive Health Technologies Ltd.



**Recommended Adult Use:** Take one capsule daily in the morning with at least 8 ounces of water AND food or take one capsule with a TruPLENISH™ Nutritional Shake.

**Warning:** If you are pregnant, nursing, taking medication, have a health condition or are planning a medical procedure, consult your health professional before use. Discontinue use and consult a doctor if any adverse reaction occurs.

Do not use if inner seal is missing or broken. Keep out of reach of children. Keep bottle tightly closed. Store in a cool, dry place.

US.16001.48.001

*Please read the product labels for detailed information.*

A unique and powerful ingredient in the new, all-natural TruSHAPE formula is Salacia, a plant known to naturally support the healthy digestion of carbohydrates and the feeling of satiety. Additional ingredients also include garcina cambogia, chromium, ginger, modified citrus pectin and glyconutrients from Manapol®.

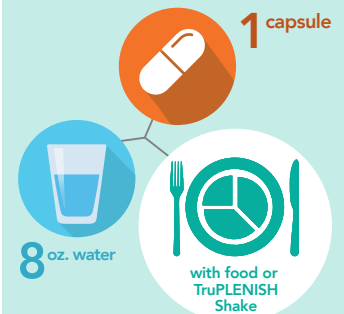
**IF YOU'RE READY TO TAKE BACK YOUR LIFE AND SEE RESULTS,  
CONTACT ME TODAY!**

**P.S. In 30 days, you'll wish you had started today!**

How to incorporate the new TruSHAPE capsule into the TruHealth 30-day Fat-loss System:

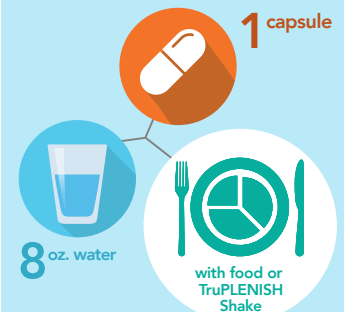
### During TruHealth 30-Day Fat-Loss System

Cleanse Days



Once Daily in the Morning

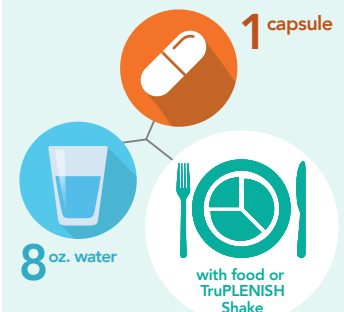
Nourish Days



Once Daily in the Morning

### Maintenance

Daily Use



Once Daily in the Morning

Learn more about the TruHealth Fat-Loss System:  
<http://library.mannatech.com/8770>



\*Always consult with your physician or other qualified healthcare provider before embarking on a new diet or program. This program is not recommended for pregnant or lactating women. If you are taking medications, have a health condition or are planning a medical procedure, consult your health professional before beginning this program. It is also not recommended for children under the age of 18. If you have any specific questions about these matters you should consult your doctor or other healthcare provider.

© 2022 Mannatech, Incorporated. All rights reserved.

Manapol, TruHealth, TruHealth Design, TruPLENISH, TruSHAPE, Mannatech and Stylized M Design are trademarks of Mannatech, Incorporated.  
21551.0122